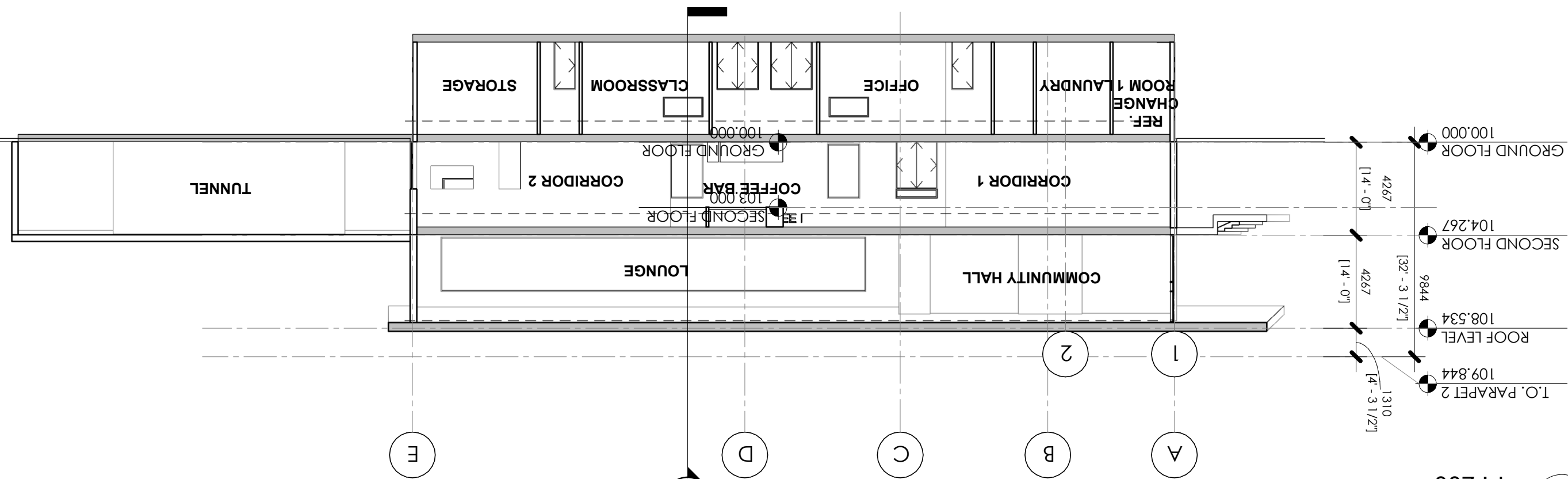


2

# E/W BUILDING SECTION

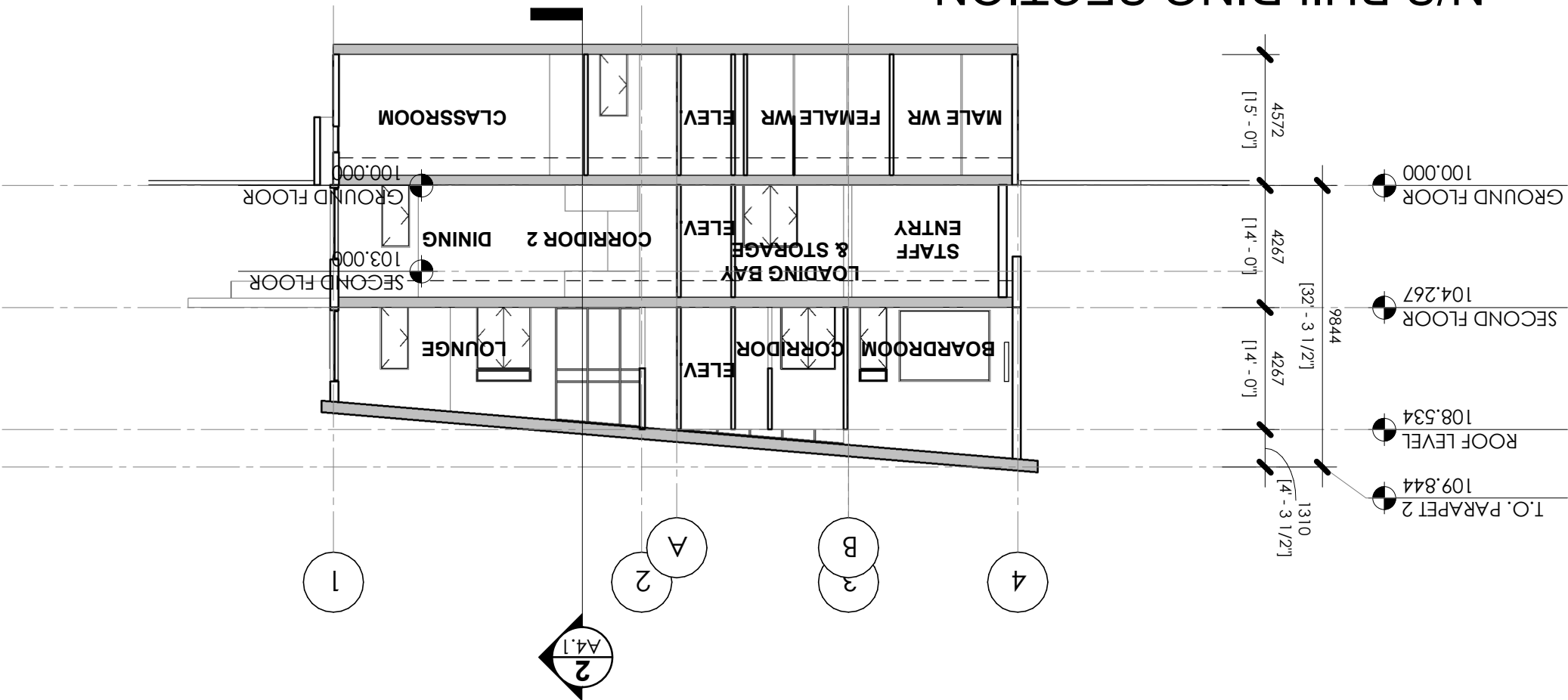
1 : 200



1

# N/S BUILDING SECTION

1 : 200



## EDMONTON SCOTTISH SOCIETY CLUBHOUSE

PRELIMINARY

FOR: EDMONTON SCOTTISH SOCIETY  
3105 - 101 STREET SW EDMONTON

REV: - - - - - PROJECT No: - - - - - SHEET No: - - - - -  
DC09 - - - - - 2148 - - - - - A4.1 - - - - - BUILDING SECTIONS

SCALE: (81/16")  
1 : 200

DATE:  
DECEMBER 13, 2021

L7 ARCHITECTURE

205, 4208 - 97 ST NW  
Edmonton, AB T6E 5Z9  
780.451.4376  
Info@L7arch.ca  
L7architecture.ca

THIS DRAWING, MATERIALS AND FINISHES, COULD BE SUBJECT TO CHANGE WITHOUT NOTICE. ANY AND ALL DIMENSIONS TO BE RELIED UPON OR THEREAS, AS A REPRESENTATION OF AN INTERPRETATION OF THE INFORMATION PROVIDED BY AN INDIVIDUAL, UNDER PARTIAL, WE MAKE NO WARRANTIES, REPRESENTATIONS OR GUARANTEES, WHETHER EXPRESSED OR IMPLIED, THAT THE CONTENT OF SAME ARE COMPLETE, ACCURATE, REASONABLE OR UP TO DATE. INCLUDING, WITHOUT LIMITATION, ANY AND ALL DIMENSIONS, ACCURACY, COMPLETENESS OR FITNESS FOR ANY PARTICULAR PURPOSES (SUCH AS CONTENT). ALTHOUGH WE MAKE REASONABLE EFFORTS TO PROVIDE SAME WITH SOME ACCURACY, WE MAKE NO REPRESENTATIONS, WARRANTIES OR GUARANTEES, WHETHER EXPRESSED OR IMPLIED, THAT THE CONTENT OF SAME ARE COMPLETE, ACCURATE, REASONABLE OR UP TO DATE.